

TEST CONDITIONS

Test Date	5/6/2026
Test Conductor	Kyle Giella
Boat Weight as Tested (lbs)	7200
Air Temperature (degrees F)	80
Elevation (ft)	0
Sea State	Choppy
Wind Velocity range (mph)	20
Fresh/Salt Water	Brackish
Fuel Level at Testing (gal)	75

ENGINE SPECIFICATIONS

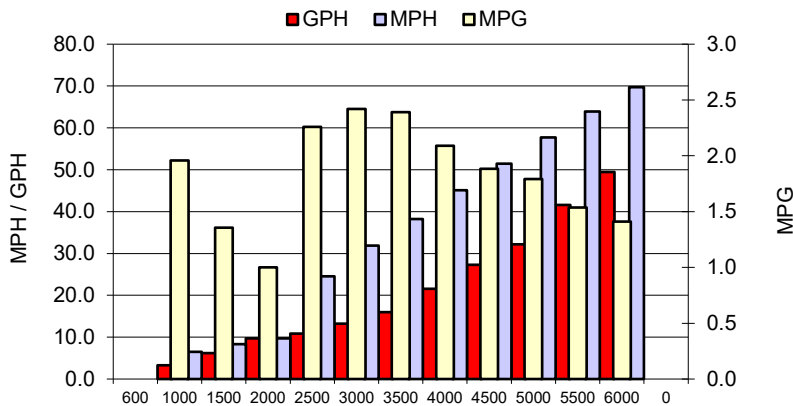
Number of Engines	2
Engine	V8 Verado
Horsepower	300
Cylinders	8
Drive or gear model and ratio	HD Camber 1.85
Mounting Bolt Hole	2,2
Engine Height (in)	3.5,3.5
Engine Setback (in)	36.0,36.0
Engine Length (in)	25,25

PERFORMANCE SUMMARY

Top Speed (mph @ rpm)	70	5967
Acceleration 0 - 20 mph (seconds)	4.75	
Acceleration 0 - 30 mph (seconds)	6.69	

PROPELLER SPECIFICATIONS

Mercury Name	Revolution 4
Material	Stainless Steel
Pitch	23.0,23.0
Number of Blades	4

PERFORMANCE CURVE

BOAT SPECIFICATIONS

Region/s sold	
Manufacturer	Blazer Bay
Website	
Boat Model	2800 Makaira
Boat Type	Inshore Saltwater
Material	Fiberglass
Length (ft)	27.1
Beam (ft)	9.1
Max hp Capacity	600
Fuel Tank Capacity (gal)	135
Steering Type	Power Steering
Dry Boat Weight (lbs)	5800

PERFORMANCE DATA

RPM	SPEED	FUEL CONSUMPTION	FUEL CONSUMPTION	RANGE
RANGE	MPH	GPH	MPG	MILES
600	0.0	0.0	0.0	0
1000	6.5	3.3	2.0	264
1500	8.4	6.2	1.4	183
2000	9.7	9.7	1.0	135
2500	24.5	10.9	2.3	305
3000	31.9	13.2	2.4	327
3500	38.2	16.0	2.4	323
4000	45.1	21.6	2.1	282
4500	51.5	27.3	1.9	254
5000	57.7	32.2	1.8	242
5500	63.9	41.6	1.5	208
6000	69.7	49.4	1.4	190
0	0.0	0.0	0.0	0
0	0.0	0.0	0.0	0

This data is internal to Brunswick.